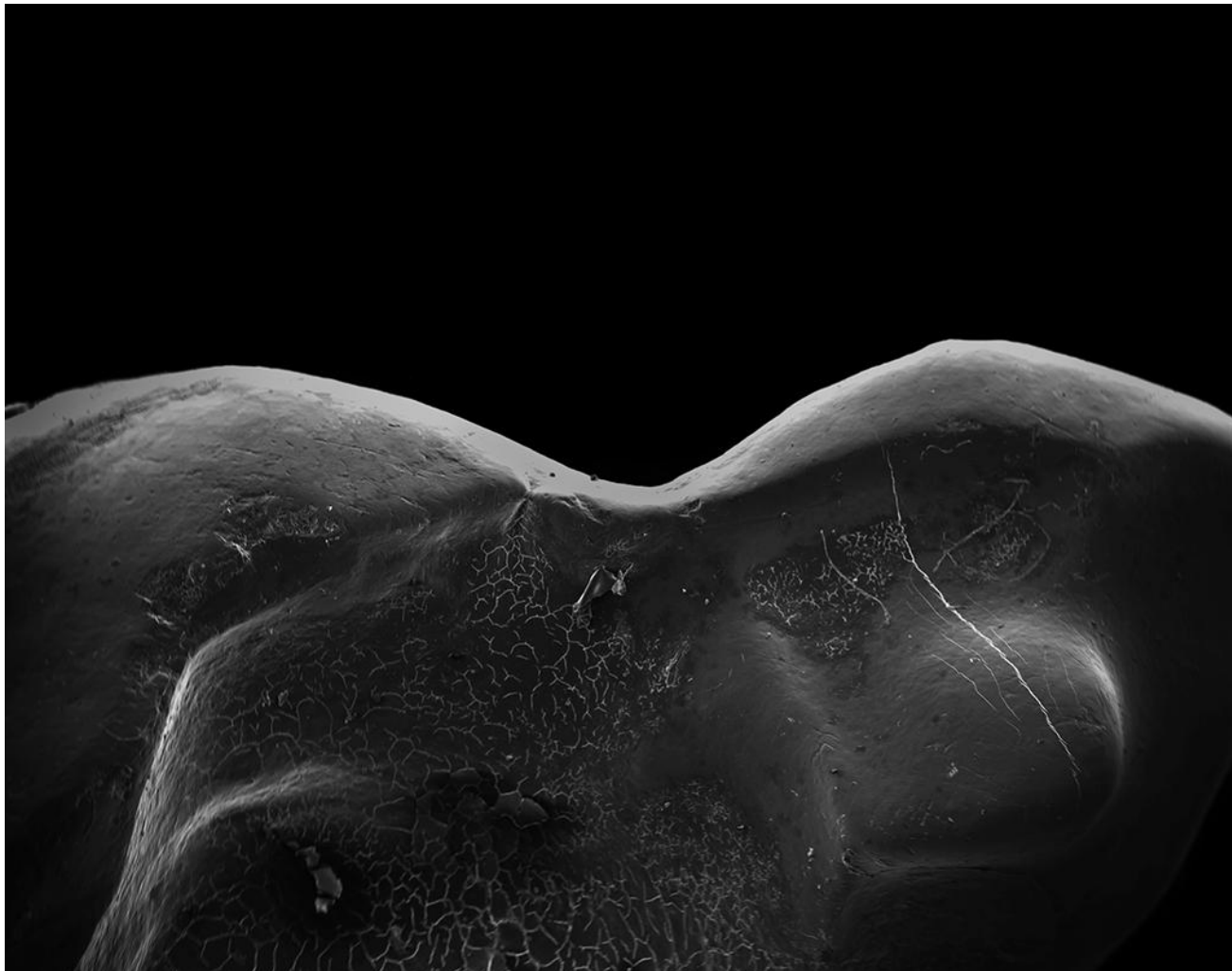


KARA HEALEY

68 Poplar Street, Gloucester, Ma 01930

978-273-7295 • [www.karahealey.com](http://www.karahealey.com) • [karahealey@gmail.com](mailto:karahealey@gmail.com)

SELECTED WORKS



## WINNIE

From the series *Trace*.

The pictures in this series, made with the Scanning Electron Microscope, explore the physicality of nostalgia and sentimentality while examining concepts of identity formation, memento mori, and deconstruction.

*Archival inkjet prints from digital files*

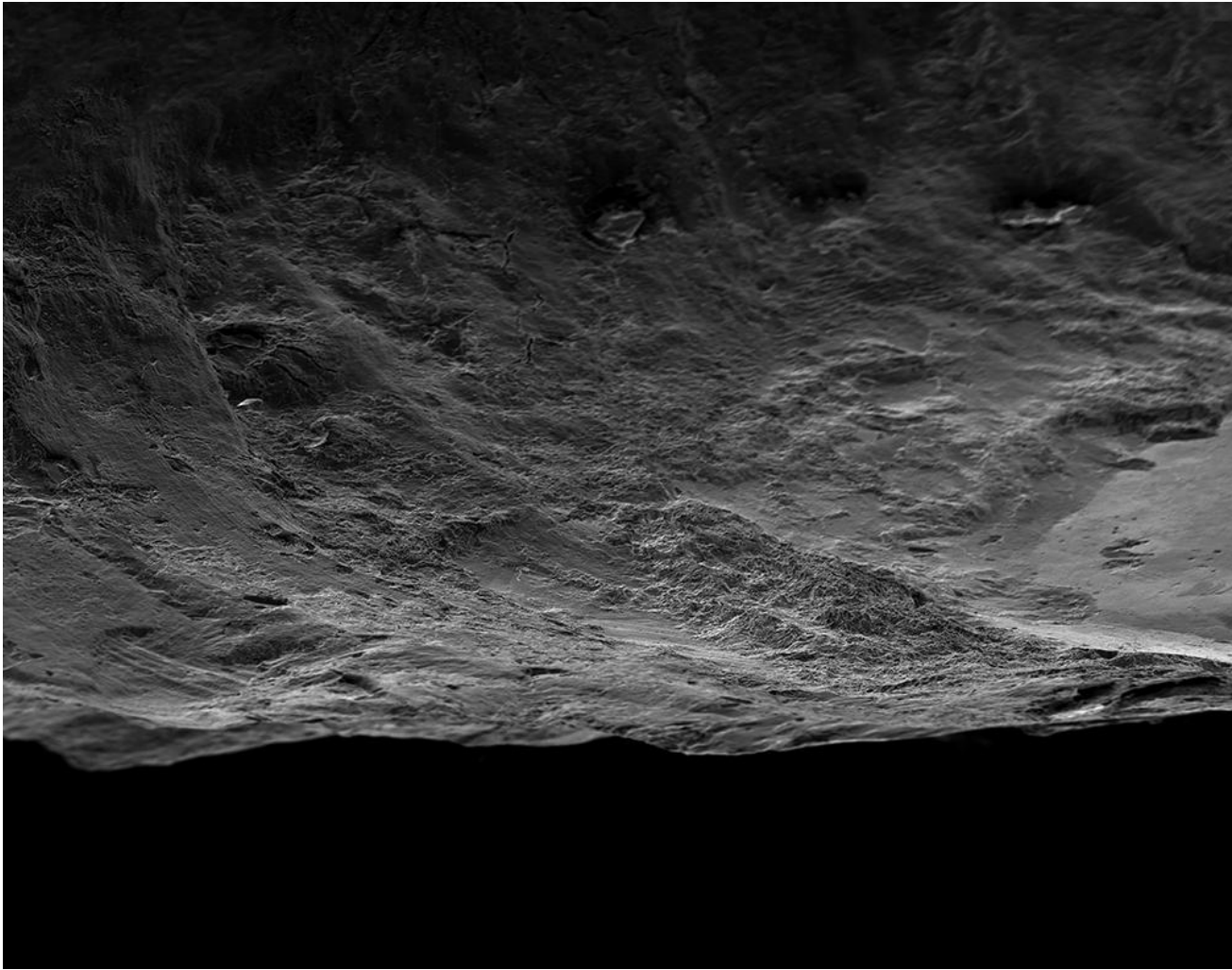


## OBOE

From the series *Trace*.

The pictures in this series, made with the Scanning Electron Microscope, explore the physicality of nostalgia and sentimentality while examining concepts of identity formation, memento mori, and deconstruction.

*Archival inkjet prints from digital files*



HARPER

From the series *Trace*.

The pictures in this series, made with the Scanning Electron Microscope, explore the physicality of nostalgia and sentimentality while examining concepts of identity formation, memento mori, and deconstruction.

*Archival inkjet prints from digital files*





## I MISS JACK

From the series

*The Angell, Oak and Waterman*

This series focuses on the inadequacy  
of episodic memory and the  
separation of self from other.

*Silver gelatin prints from large  
format negatives.*



ALEX

From the series

*The Angell, Oak and Waterman*

This series focuses on the inadequacy  
of episodic memory and the  
separation of self from other.

*Silver gelatin prints from large  
format negatives.*



THE INCOMPATIBILITY  
OF SUN SIGNS

From the series

*The Angell, Oak and Waterman*

This series focuses on the inadequacy  
of episodic memory and the  
separation of self from other.

*Silver gelatin prints from large  
format negatives.*



## ALEX AND JAMES

From the series

*The Angell, Oak and Waterman*

This series focuses on the inadequacy  
of episodic memory and the  
separation of self from other.

*Silver gelatin prints from large  
format negatives.*



ME AND STEVEN

From the series

*The Angell, Oak and Waterman*

This series focuses on the inadequacy  
of episodic memory and the  
separation of self from other.

*Silver gelatin prints from large  
format negatives.*

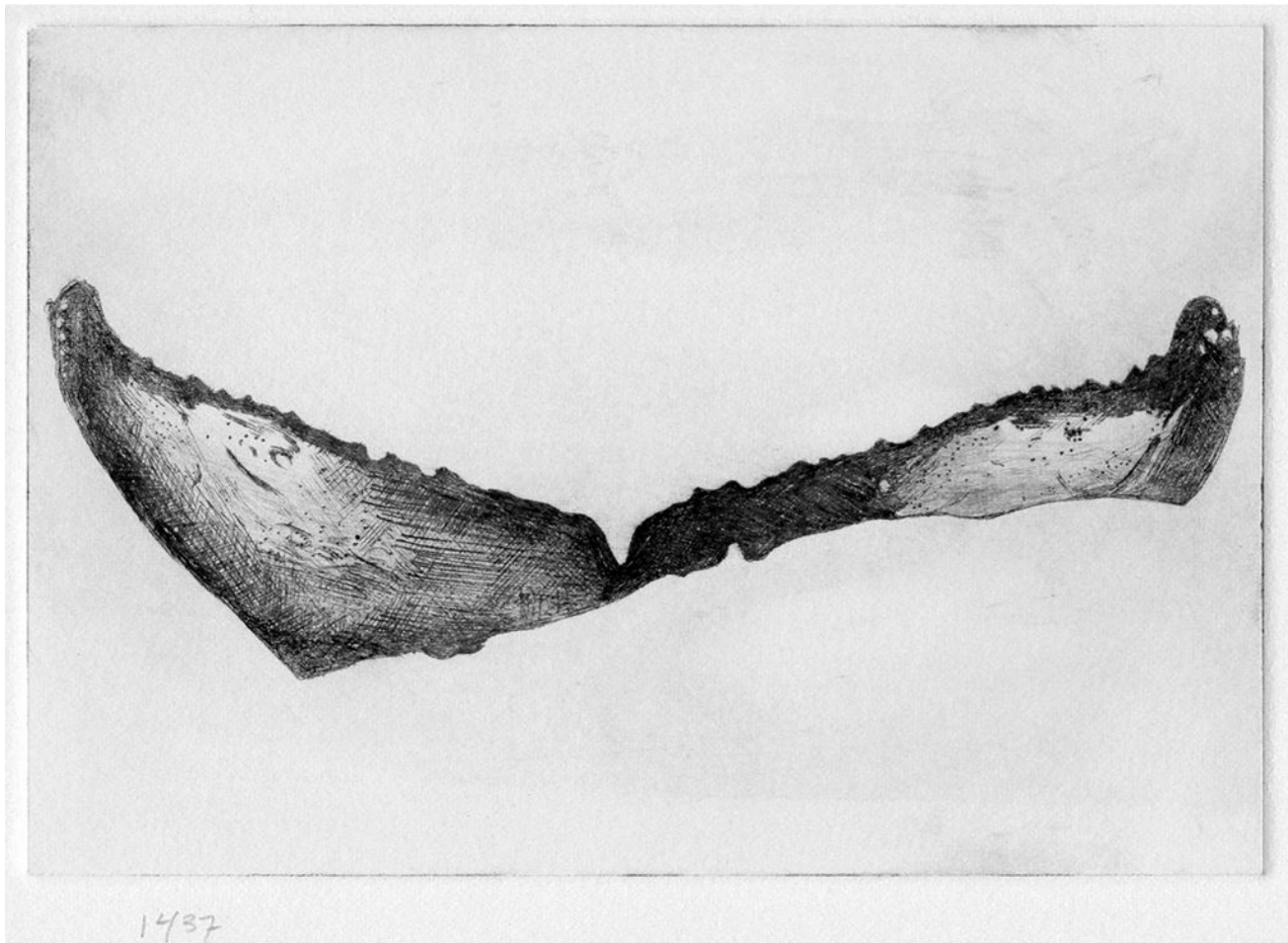


## MARKINGS

From the series *Markings*.

This work is a combination of etchings and photographs exploring scarring and influence (both physical and cognitive) and their role in self-identification, distortion and self-appraisal.

*Drypoint etching on BFK*



1437

From the series *Markings*.

Detail.

This work is a combination of etchings and photographs exploring scarring and influence (both physical and cognitive) and their role in self-identification, distortion and self-appraisal.

*Drypoint etching on BFK*



UNTITLED

From the series *Markings*.

This work is a combination of etchings and photographs exploring scarring and influence (both physical and cognitive) and their role in self-identification, distortion and self-appraisal.

*Silver gelatin prints from large format negatives.*





# UNTITLED

From the series *Markings*.

This work is a combination of etchings and photographs exploring scarring and influence (both physical and cognitive) and their role in self-identification, distortion and self-appraisal.

*Silver gelatin prints from large format negatives.*



UNTITLED

From the series *Gettysburg*.

This work examines the ephemeral nature of place, memory and circumstance through the remaining landscape.

*Photopolymer photogravure on BFK*





UNTITLED

From the series *Gettysburg*.

This work examines the ephemeral nature of place, memory and circumstance through the remaining landscape.

*Photopolymer photogravure on BFK*



UNTITLED

From the series *Gettysburg*.

This work examines the ephemeral nature of place, memory and circumstance through the remaining landscape.

*Photopolymer photogravure on BFK*

KARA HEALEY

68 Poplar Street, Gloucester, Ma 01930

978-273-7295 • [www.karahealey.com](http://www.karahealey.com) • [karahealey@gmail.com](mailto:karahealey@gmail.com)

STUDENT WORKS - Grouped by Class

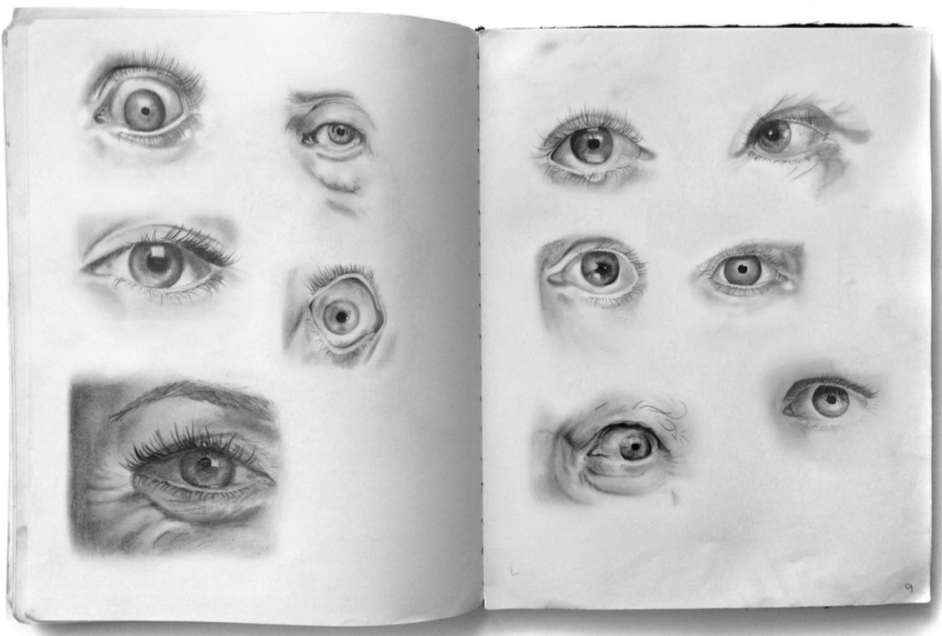




DRAWING



DRAWING

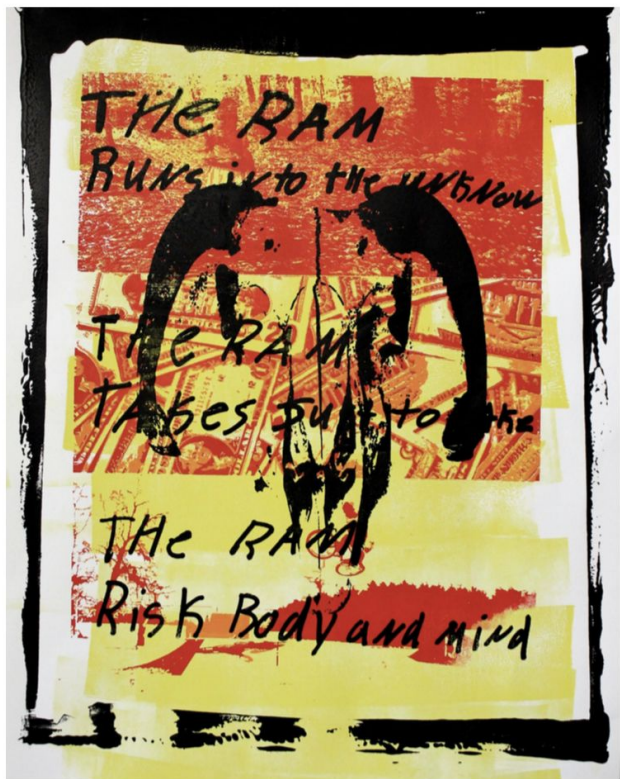


DRAWING





PRINTMAKING



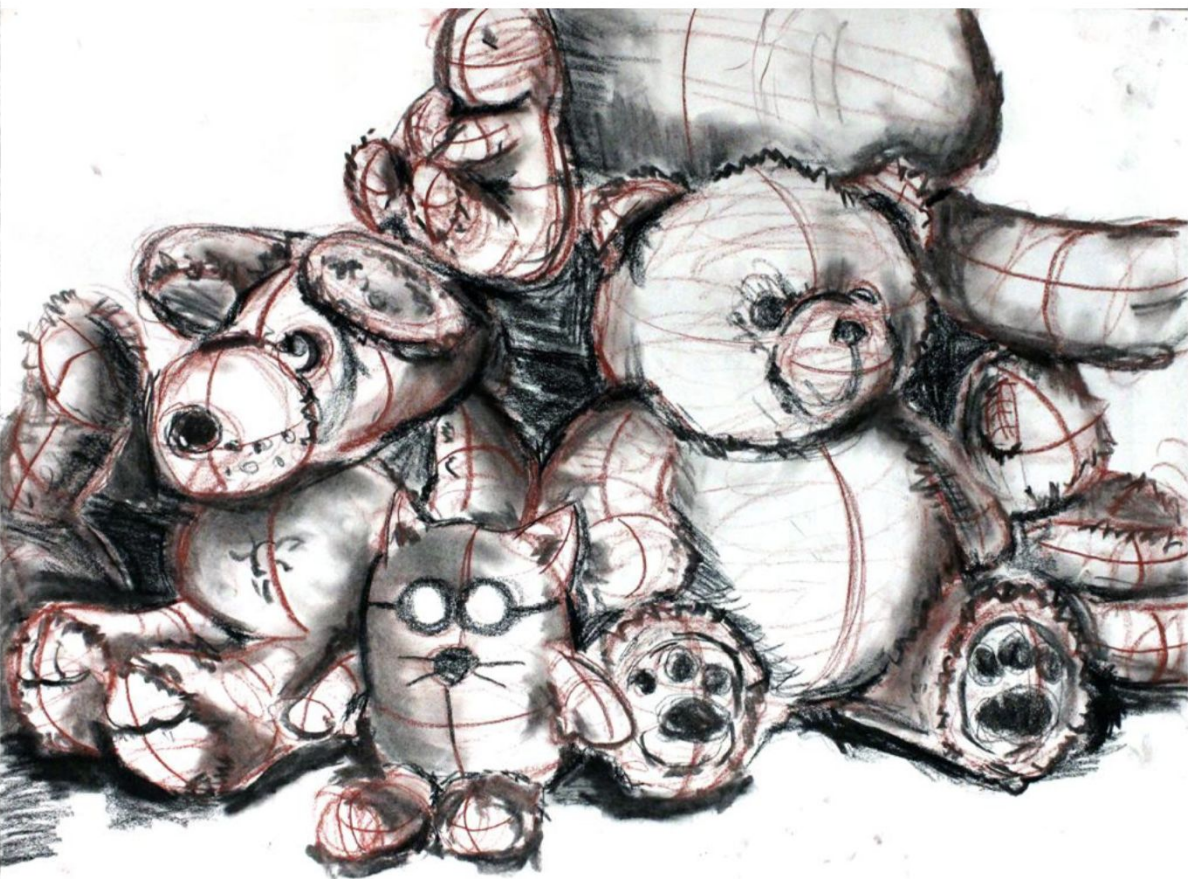
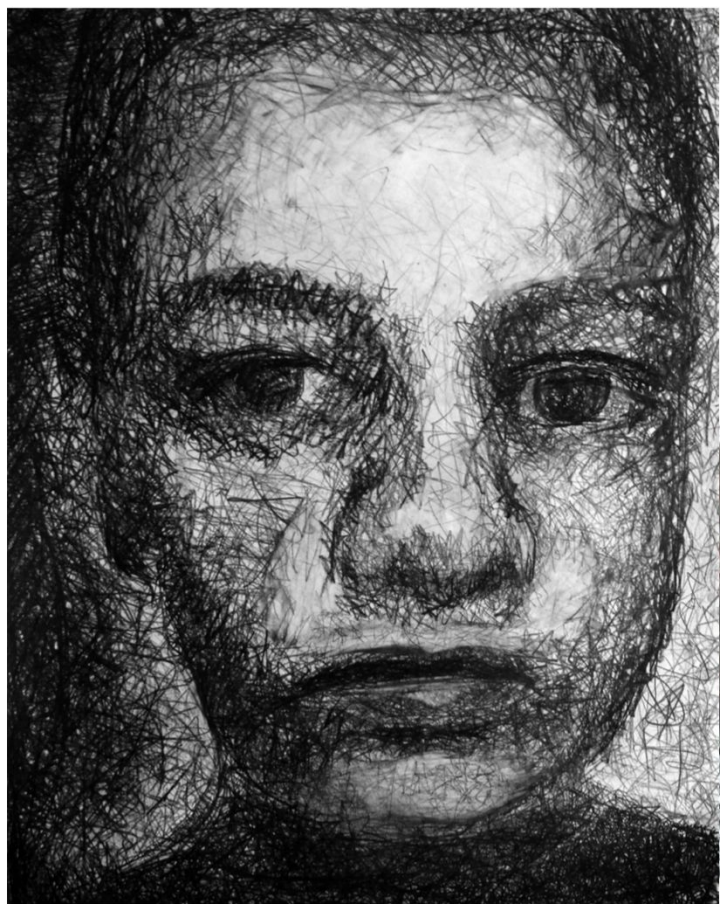
PRINTMAKING





PRINTMAKING





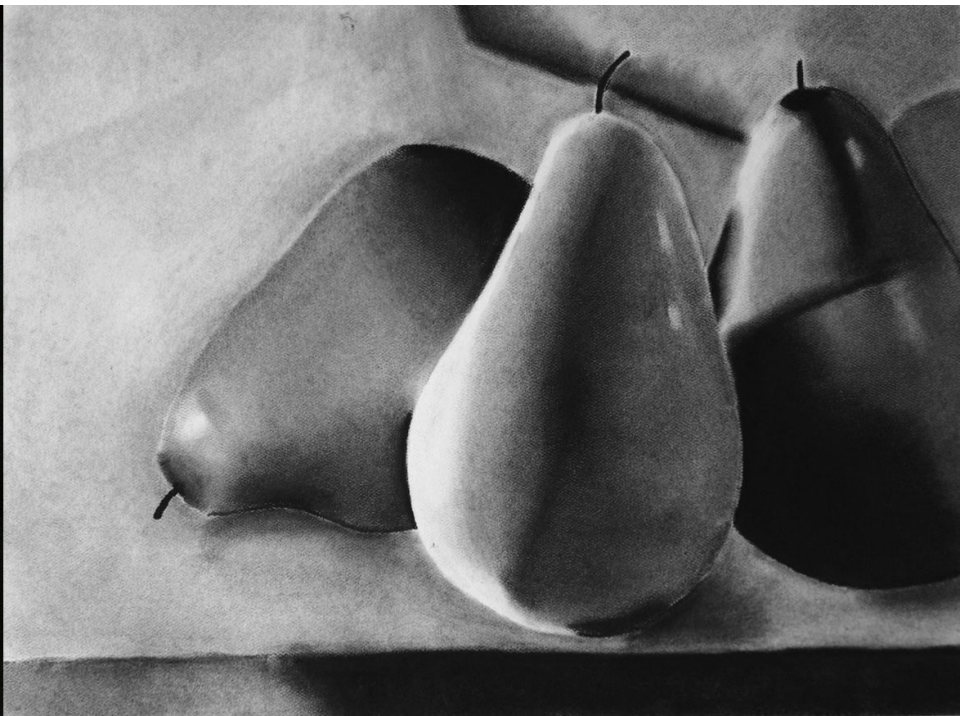
FOUNDATIONS





# FOUNDATIONS





FOUNDATIONS



FOUNDATIONS





FOUNDATIONS

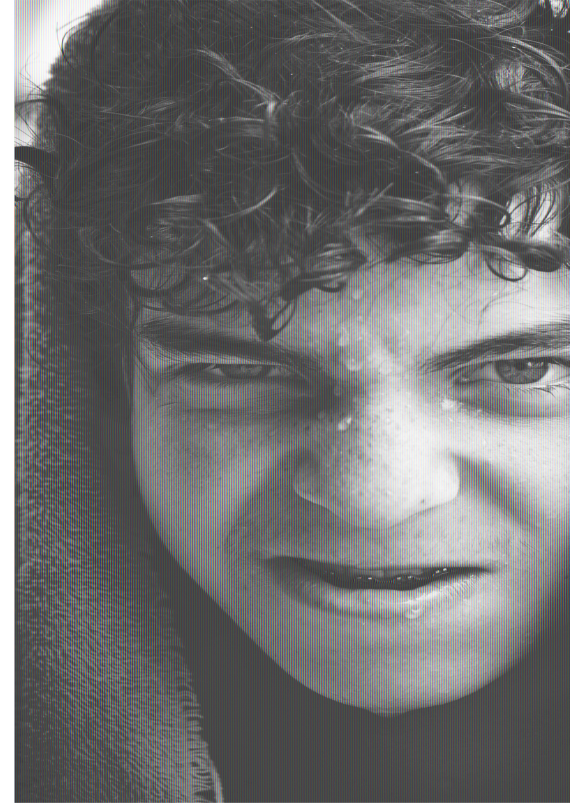




PHOTOGRAPHY - DARKROOM



PHOTOGRAPHY - DARKROOM



PHOTOGRAPHY - DIGITAL



PHOTOGRAPHY - DIGITAL



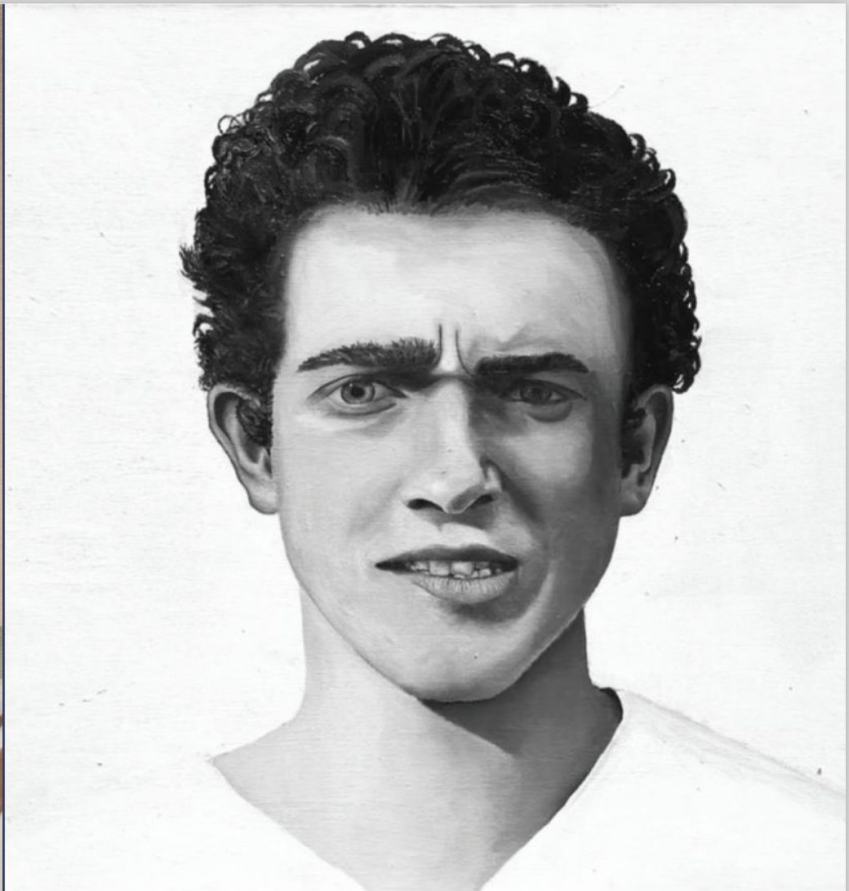


PHOTOGRAPHY - ALTERNATIVE PROCESSES



PHOTOGRAPHY - ALTERNATIVE PROCESSES



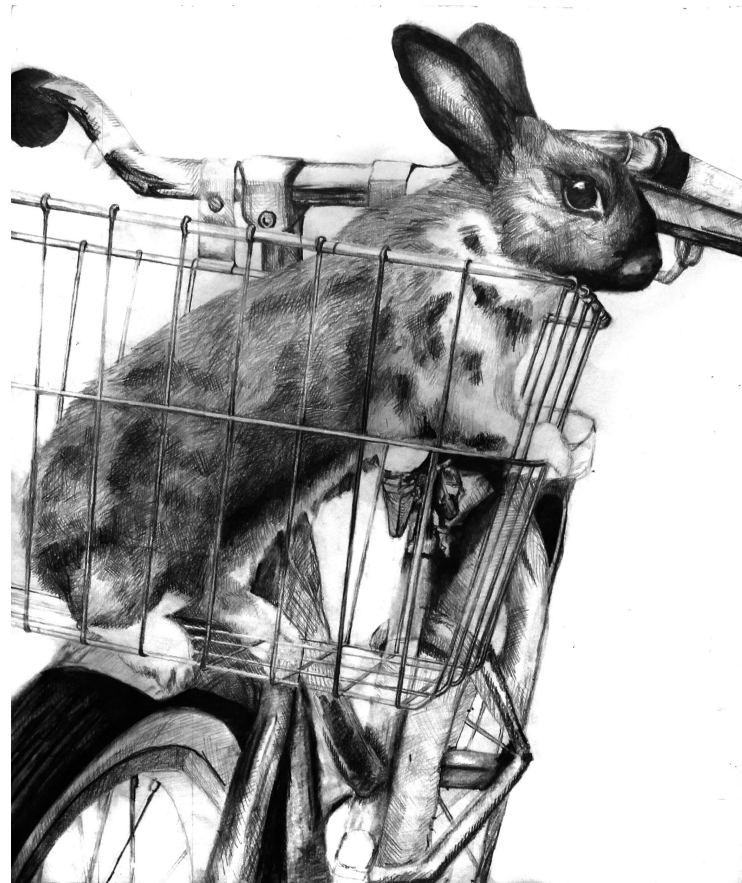


PAINTING



PAINTING

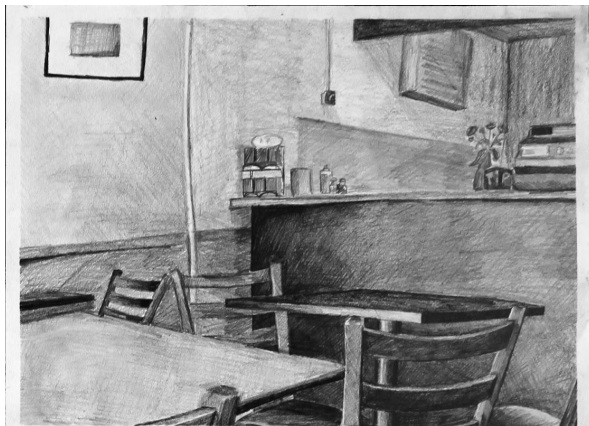




PORTFOLIO



PORTFOLIO



PORTFOLIO

KARA HEALEY, 2020